

## PRESS RELEASE

### **Storage and retrieval machines successfully brought in – Würth Industrie Service's high-bay warehouse takes shape!**

*Bad Mergentheim/Main-Tauber-Kreis.* 46 metres long, weighing 22,5 tonnes, manoeuvred 100 metres over the roofs: A true work requiring precision, weighing several tons on the heights of Drillberg. The excavations for building a new automated high-bay warehouse with additional 59,000 storage spaces covering more than 4,000 square metres started as early as July 2022. Last Monday, 16th October 2023, the first storage and retrieval machines were brought in to take over the automated storage and retrieval of pallets in the warehouse. Würth Industrie Service GmbH & Co. KG thus has its sights firmly set on commissioning in April 2024.

Würth Industrial Park is considered as one of the most advanced logistics centres for industrial supply in the entire Europe. With over 65,000 square metres, which is equivalent to about 9 football fields, it is the pulsating linchpin of the company. From here, around 20,000 customers are securely supplied with production resources as well as auxiliary and operating materials. Modern, fully automated high-bay and shuttle warehouses with a capacity of more than 650,000 storage locations, a 34-kilometre-long conveyor system, autonomous bin shuttles, camera inspection systems and self-learning robots are used – all with the goal of ensuring optimised workplace ergonomics, a sustainably healthy way of working by taking over physically stressful tasks and an increased level of automation and digitalisation. In order to ensure the long-term supply security for all customers across Europe and to meet the demands of an increasingly growing product range of currently 1.4 million items, Würth Industrie Service is consistently investing in further expanding its warehouse capacity. With the new high-bay warehouse – 50 metres high, 34 metres wide, 121 metres long - the provider of C-Parts management is once again expanding its capacities by 59,000 additional pallet storage spaces. This increases the high-bay capacity at the Bad Mergentheim location by about 33 percent to a total of 235,000 pallet storage spaces. Now that the silo-type shelving system has been completed, three of six storage and retrieval machines (SRM for short) have been brought in. Over an aisle length of 120 metres, the rail-guided vehicles will now take over the fully automated storage and retrieval of pallets with small parts in the warehouse. They will operate in six aisles with a maximum travel speed of 180 m/min and a lifting speed of up to 70 m/min. Each SRM has two telescopic forks as load handling attachments with a total load capacity of approximately 2,400 kg. The efficient 46 metre high

Würth Industrie Service  
GmbH & Co. KG  
Pia Schmitt  
Press and Public Relations  
97980 Bad Mergentheim,  
Germany

T +49 7931 91-3409  
F +49 7931 91-4000  
[www.wuerth-industrie.com](http://www.wuerth-industrie.com)  
[Pia.Schmitt@wuerth-industrie.com](mailto:Pia.Schmitt@wuerth-industrie.com)

20.10.2023

storage and retrieval machines are particularly economical on space thanks to their single column design, and can carry out up to 600 pallet movements per hour with their two load handling attachments.

"With the new high-bay warehouse, we are realising dimensions that rarely exist in this overall complexity. The logistical expansion will thus significantly increase the efficiency and capacity in the entire value-added process.", said Helmut Eisenkolb, Head of Logistics at Würth Industrie Service.

In Kardex, Würth Industrie Service has found a partner that is a true expert in its field as a globally active industrial partner for intralogistics solutions and as a leading provider of automated storage solutions and material flow systems. "In a project of this magnitude, it is always impressive to see so many experts with a wide range of expertise acting as one big unit in the shortest possible time," says Lars Wagner, Project Manager, Operations New Business Refurbishment at MLOG Logistics GmbH.

### **Millimetre by millimetre**

In order to safely transport the storage and retrieval machines from Kardex's production site in Neuenstadt am Kocher to Bad Mergentheim by heavy goods transport, a total of three 55-metre-long trucks were utilised to transport the systems to Drillberg. With the utmost precision, the crane operators steered the 22.5-tonne machines over the still open roof into the high-bay warehouse. At a height of 100 metres, it was a real precision work for all those responsible.

### **Sustainability in focus**

With the construction measures being currently implemented and planned, Würth Industrie Service is taking significant steps to ensure a seamless supply to the customers in the future as well as is contributing to consciously acting sustainably. How does this work in the case of the storage and retrieval machines? The energy requirement of the storage and retrieval machines is optimised by means of DC link coupling, which can divert the energy between two drives in a sensible manner. This means that the energy saved by the lift drive during lowering can in turn be used for the travel drive. In addition, the storage and retrieval machines from Kardex are convincing in terms of robustness, durability, maintenance and, above all, quality. Another contribution to sustainability is the greenhouse gas-neutral energy supply. For this reason, the south facade of the new high-bay warehouse will be equipped with a large-scale photovoltaic system with a total output of 1,028 kWp. This is intended to achieve a total output of over 2,000

kWp and a generation volume of around 1,500,000 kWh at Würth Industrial Park. Always being one step ahead and acting sustainably and with foresight is what the company stands for.

**Photo material:**

**Photo captions**

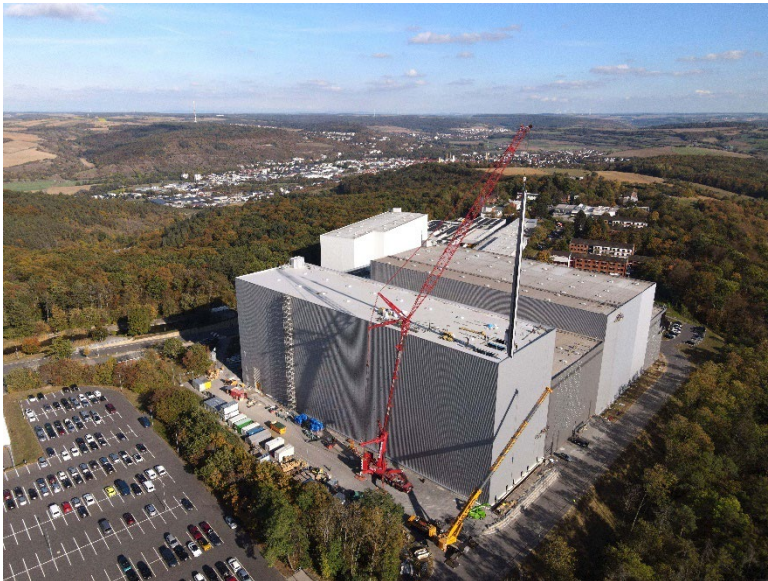


Photo 1+2: Introduction of storage and retrieval machines.jpg

Caption 1+2: The new storage and retrieval machines were transported to their place in the high-bay warehouse of Würth Industrie Service GmbH & Co. KG by heavy goods vehicle and crane.

Photo source 1+2: Paul Dürr, Würth Industrie Service GmbH & Co. KG



Photo 3: Photovoltaic system\_south facade.jpg

Caption 3: The south facade of the new high-bay warehouse will be equipped with a large-scale photovoltaic system.

Photo source 3: Matthäa Steinmann, Würth Industrie Service GmbH & Co. KG



Photo 4: Würth Industrie Service\_Kardex.jpg

Caption 4: In Kardex, Würth Industrie Service has found a partner that is a true expert in its field: (from left to right): Marcus Otto, General Manager Purchase Department at Würth Industrie Service, Frank Freudenberger, Logistics management at Würth Industrie Service, Jochen Strauß, General Manager at Kardex Mlog, Lars Wagner, Project Manager at Kardex Mlog, Sebastian Haist, Project Manager at Kardex Mlog.

Photo source 4: Tabea Haber, Würth Industrie Service GmbH & Co. KG



#### Brief profile of Würth Industrie Service GmbH & Co. KG

Within the Würth Group, Würth Industrie Service GmbH & Co. KG is responsible for supplying to the industrial sector. Since its foundation in the year 1999, the company is located at the Würth Industrial Park in Bad Mergentheim, Germany with over 1,750 employees. As a one-stop C-Parts provider, the company offers its customers a specialised product range with over 1,400,000 items: from screws and tools to connection and fastening technology, technical chemicals as well as occupational safety solutions. In addition to the extensive standard product range, the strength of the company lies in its customer-specific, logistical and dispositive supply and service concepts as well as special parts. Under the service brand "CPS® - C-Product Service", the company offers modular solutions, which are customised as per customer-specific requirements. Thereby, the consumption-based and demand-based systems significantly rationalise the processes for purchase, logistics and quality assurance and enable the procurement of small parts in a cost-optimised manner. Logistic and dispositive services such as shelving systems that use scanners or a just-in-time supply using Kanban bin systems play a significant role in increasing productivity.